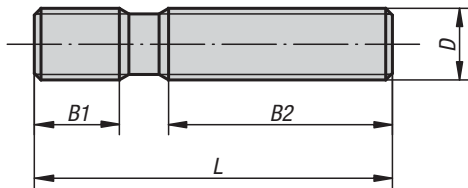


K0697**Tornillos prisioneros**

DIN 6379

**Material:**

Acero para temple y revenido.

Versión:

Rosca laminada.

M6–M12 tratado en caliente con 10.9, negro.

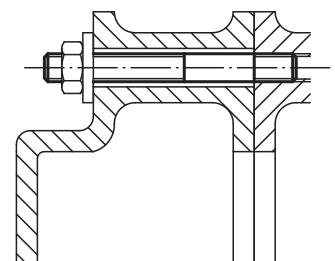
M14–M36 tratado en caliente con 8.8, negro.

Ejemplo de pedido:

K0697.12125

KIPP Tornillos prisioneros DIN 6379

| Referencia | D | L | B1 | B2 |
|-------------|-----|-----|----|-----|
| K0697.0632 | M6 | 32 | 9 | 16 |
| K0697.0640 | M6 | 40 | 9 | 20 |
| K0697.0650 | M6 | 50 | 9 | 30 |
| K0697.0663 | M6 | 63 | 9 | 40 |
| K0697.0680 | M6 | 80 | 9 | 50 |
| K0697.06100 | M6 | 100 | 9 | 63 |
| K0697.0840 | M8 | 40 | 11 | 20 |
| K0697.0863 | M8 | 63 | 11 | 40 |
| K0697.0880 | M8 | 80 | 11 | 50 |
| K0697.08100 | M8 | 100 | 11 | 63 |
| K0697.08125 | M8 | 125 | 11 | 75 |
| K0697.08160 | M8 | 160 | 11 | 100 |
| K0697.1050 | M10 | 50 | 13 | 25 |
| K0697.1080 | M10 | 80 | 13 | 50 |
| K0697.10100 | M10 | 100 | 13 | 75 |
| K0697.10125 | M10 | 125 | 13 | 75 |
| K0697.10160 | M10 | 160 | 13 | 100 |
| K0697.10200 | M10 | 200 | 13 | 125 |
| K0697.1250 | M12 | 50 | 15 | 25 |
| K0697.1263 | M12 | 63 | 15 | 32 |
| K0697.1280 | M12 | 80 | 15 | 50 |
| K0697.12100 | M12 | 100 | 15 | 63 |
| K0697.12125 | M12 | 125 | 15 | 75 |
| K0697.12160 | M12 | 160 | 15 | 100 |
| K0697.12200 | M12 | 200 | 15 | 125 |
| K0697.1463 | M14 | 63 | 17 | 32 |
| K0697.1480 | M14 | 80 | 17 | 50 |
| K0697.14100 | M14 | 100 | 17 | 63 |
| K0697.14125 | M14 | 125 | 17 | 75 |
| K0697.14160 | M14 | 160 | 17 | 100 |
| K0697.14200 | M14 | 200 | 17 | 125 |
| K0697.14250 | M14 | 250 | 17 | 160 |
| K0697.1663 | M16 | 63 | 19 | 32 |
| K0697.1680 | M16 | 80 | 19 | 50 |
| K0697.16100 | M16 | 100 | 19 | 63 |
| K0697.16125 | M16 | 125 | 19 | 75 |
| K0697.16160 | M16 | 160 | 19 | 100 |
| K0697.16200 | M16 | 200 | 19 | 125 |
| K0697.16250 | M16 | 250 | 19 | 160 |
| K0697.16315 | M16 | 315 | 19 | 180 |



K0697**Tornillos prisioneros**

DIN 6379

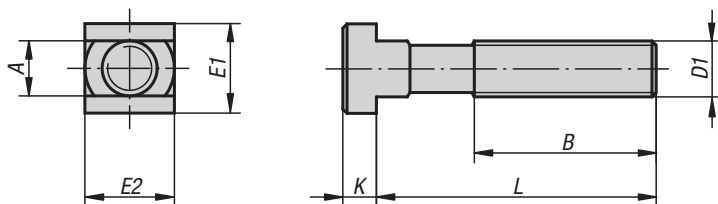


| Referencia | D | L | B1 | B2 |
|--------------|-----|------|----|-----|
| K0697.16350 | M16 | 350 | 19 | 200 |
| K0697.16500 | M16 | 500 | 20 | 315 |
| K0697.1880 | M18 | 80 | 23 | 50 |
| K0697.18125 | M18 | 125 | 23 | 75 |
| K0697.18160 | M18 | 160 | 23 | 100 |
| K0697.18200 | M18 | 200 | 23 | 125 |
| K0697.18250 | M18 | 250 | 23 | 150 |
| K0697.18315 | M18 | 315 | 23 | 180 |
| K0697.2080 | M20 | 80 | 27 | 32 |
| K0697.20125 | M20 | 125 | 27 | 70 |
| K0697.20160 | M20 | 160 | 27 | 100 |
| K0697.20200 | M20 | 200 | 27 | 125 |
| K0697.20250 | M20 | 250 | 27 | 160 |
| K0697.20315 | M20 | 315 | 27 | 200 |
| K0697.20400 | M20 | 400 | 27 | 250 |
| K0697.20500 | M20 | 500 | 27 | 315 |
| K0697.22100 | M22 | 100 | 31 | 45 |
| K0697.22160 | M22 | 160 | 31 | 100 |
| K0697.22200 | M22 | 200 | 31 | 125 |
| K0697.22250 | M22 | 250 | 31 | 160 |
| K0697.22315 | M22 | 315 | 31 | 180 |
| K0697.22400 | M22 | 400 | 31 | 250 |
| K0697.24100 | M24 | 100 | 35 | 45 |
| K0697.24125 | M24 | 125 | 35 | 63 |
| K0697.24160 | M24 | 160 | 35 | 100 |
| K0697.24200 | M24 | 200 | 35 | 125 |
| K0697.24250 | M24 | 250 | 35 | 160 |
| K0697.24315 | M24 | 315 | 35 | 200 |
| K0697.24400 | M24 | 400 | 35 | 250 |
| K0697.24500 | M24 | 500 | 35 | 315 |
| K0697.24630 | M24 | 630 | 35 | 315 |
| K0697.27125 | M27 | 125 | 39 | 56 |
| K0697.27200 | M27 | 200 | 39 | 125 |
| K0697.27315 | M27 | 315 | 39 | 200 |
| K0697.27400 | M27 | 400 | 39 | 250 |
| K0697.27500 | M27 | 500 | 39 | 315 |
| K0697.30125 | M30 | 125 | 43 | 56 |
| K0697.30200 | M30 | 200 | 43 | 125 |
| K0697.30315 | M30 | 315 | 43 | 200 |
| K0697.30500 | M30 | 500 | 43 | 315 |
| K0697.30700 | M30 | 700 | 43 | 400 |
| K0697.301000 | M30 | 1000 | 44 | 400 |
| K0697.36160 | M36 | 160 | 51 | 80 |
| K0697.36200 | M36 | 200 | 51 | 125 |
| K0697.36250 | M36 | 250 | 51 | 160 |
| K0697.36315 | M36 | 315 | 51 | 200 |
| K0697.36400 | M36 | 400 | 51 | 250 |
| K0697.36500 | M36 | 500 | 51 | 315 |
| K0697.36700 | M36 | 700 | 51 | 400 |



K0698**Tornillos para ranuras en T**

DIN 787

**KIPP Tornillos para ranuras en T DIN 787**

| Referencia | Medida nominal de la ranura | D1 | L | A | B | E1/E2 | K |
|--------------|-----------------------------|-----|-----|------|-----|-------|----|
| K0698.0625 | 6 | M6 | 25 | 5,7 | 15 | 10 | 4 |
| K0698.0640 | 6 | M6 | 40 | 5,7 | 28 | 10 | 4 |
| K0698.0663 | 6 | M6 | 63 | 5,7 | 40 | 10 | 4 |
| K0698.0832 | 8 | M8 | 32 | 7,7 | 22 | 13 | 6 |
| K0698.0850 | 8 | M8 | 50 | 7,7 | 35 | 13 | 6 |
| K0698.0880 | 8 | M8 | 80 | 7,7 | 50 | 13 | 6 |
| K0698.1040 | 10 | M10 | 40 | 9,7 | 30 | 15 | 6 |
| K0698.1063 | 10 | M10 | 63 | 9,7 | 45 | 15 | 6 |
| K0698.10100 | 10 | M10 | 100 | 9,7 | 60 | 15 | 6 |
| K0698.1250 | 12 | M12 | 50 | 11,7 | 35 | 18 | 7 |
| K0698.1263 | 12 | M12 | 63 | 11,7 | 40 | 18 | 7 |
| K0698.1280 | 12 | M12 | 80 | 11,7 | 55 | 18 | 7 |
| K0698.12100 | 12 | M12 | 100 | 11,7 | 65 | 18 | 7 |
| K0698.12125 | 12 | M12 | 125 | 11,7 | 75 | 18 | 7 |
| K0698.12160 | 12 | M12 | 160 | 11,7 | 100 | 18 | 7 |
| K0698.12200 | 12 | M12 | 200 | 11,7 | 120 | 18 | 7 |
| K0698.1450 | 14 | M12 | 50 | 13,7 | 35 | 22 | 8 |
| K0698.1463 | 14 | M12 | 63 | 13,7 | 45 | 22 | 8 |
| K0698.1480 | 14 | M12 | 80 | 13,7 | 55 | 22 | 8 |
| K0698.14100 | 14 | M12 | 100 | 13,7 | 65 | 22 | 8 |
| K0698.14125 | 14 | M12 | 125 | 13,7 | 75 | 22 | 8 |
| K0698.14160 | 14 | M12 | 160 | 13,7 | 100 | 22 | 8 |
| K0698.14200 | 14 | M12 | 200 | 13,7 | 120 | 22 | 8 |
| K0698.16631 | 16 | M14 | 63 | 15,7 | 45 | 25 | 9 |
| K0698.16801 | 16 | M14 | 80 | 15,7 | 55 | 25 | 9 |
| K0698.161001 | 16 | M14 | 100 | 15,7 | 65 | 25 | 9 |
| K0698.161251 | 16 | M14 | 125 | 15,7 | 75 | 25 | 9 |
| K0698.161601 | 16 | M14 | 160 | 15,7 | 100 | 25 | 9 |
| K0698.162501 | 16 | M14 | 250 | 15,7 | 150 | 25 | 9 |
| K0698.1663 | 16 | M16 | 63 | 15,7 | 45 | 25 | 9 |
| K0698.1680 | 16 | M16 | 80 | 15,7 | 55 | 25 | 9 |
| K0698.16100 | 16 | M16 | 100 | 15,7 | 65 | 25 | 9 |
| K0698.16125 | 16 | M16 | 125 | 15,7 | 85 | 25 | 9 |
| K0698.16160 | 16 | M16 | 160 | 15,7 | 100 | 25 | 9 |
| K0698.16200 | 16 | M16 | 200 | 15,7 | 125 | 25 | 9 |
| K0698.16250 | 16 | M16 | 250 | 15,7 | 150 | 25 | 9 |
| K0698.1863 | 18 | M16 | 63 | 17,7 | 45 | 28 | 10 |

Material:

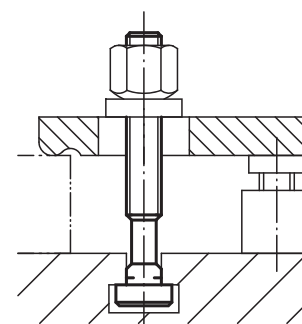
Acero para temple y revenido.

Versión:

Forjado, guía de ranuras fresada, rosca laminada.
M6–M12 tratado en caliente con 10.9, negro.
M14–M36 tratado en caliente con 8.8, negro.

Ejemplo de pedido:

K0698.1263



K0698**Tornillos para ranuras en T**

DIN 787

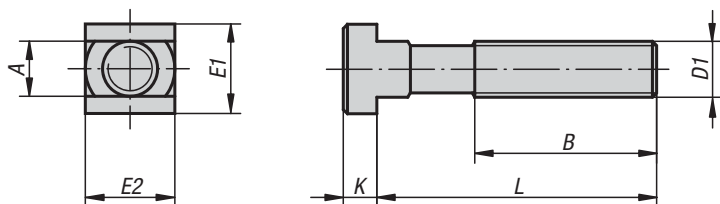


| Referencia | Medida nominal de la ranura | D1 | L | A | B | E1/E2 | K |
|-------------|-----------------------------|-----|-----|------|-----|-------|----|
| K0698.1880 | 18 | M16 | 80 | 17,7 | 55 | 28 | 10 |
| K0698.18100 | 18 | M16 | 100 | 17,7 | 65 | 28 | 10 |
| K0698.18125 | 18 | M16 | 125 | 17,7 | 85 | 28 | 10 |
| K0698.18160 | 18 | M16 | 160 | 17,7 | 100 | 28 | 10 |
| K0698.18200 | 18 | M16 | 200 | 17,7 | 125 | 28 | 10 |
| K0698.18250 | 18 | M16 | 250 | 17,7 | 150 | 28 | 10 |
| K0698.2080 | 20 | M20 | 80 | 19,7 | 55 | 32 | 12 |
| K0698.20100 | 20 | M20 | 100 | 19,7 | 65 | 32 | 12 |
| K0698.20125 | 20 | M20 | 125 | 19,7 | 85 | 32 | 12 |
| K0698.20160 | 20 | M20 | 160 | 19,7 | 110 | 32 | 12 |
| K0698.20200 | 20 | M20 | 200 | 19,7 | 125 | 32 | 12 |
| K0698.20250 | 20 | M20 | 250 | 19,7 | 150 | 32 | 12 |
| K0698.20315 | 20 | M20 | 315 | 19,7 | 190 | 32 | 12 |
| K0698.2280 | 22 | M20 | 80 | 21,7 | 55 | 35 | 14 |
| K0698.22100 | 22 | M20 | 100 | 21,7 | 65 | 35 | 14 |
| K0698.22125 | 22 | M20 | 125 | 21,7 | 85 | 35 | 14 |
| K0698.22160 | 22 | M20 | 160 | 21,7 | 110 | 35 | 14 |
| K0698.22200 | 22 | M20 | 200 | 21,7 | 125 | 35 | 14 |
| K0698.22250 | 22 | M20 | 250 | 21,7 | 150 | 35 | 14 |
| K0698.22315 | 22 | M20 | 315 | 21,7 | 190 | 35 | 14 |
| K0698.24100 | 24 | M24 | 100 | 23,7 | 70 | 40 | 16 |
| K0698.24125 | 24 | M24 | 125 | 23,7 | 85 | 40 | 16 |
| K0698.24160 | 24 | M24 | 160 | 23,7 | 110 | 40 | 16 |
| K0698.24200 | 24 | M24 | 200 | 23,7 | 125 | 40 | 16 |
| K0698.24250 | 24 | M24 | 250 | 23,7 | 150 | 40 | 16 |
| K0698.24315 | 24 | M24 | 315 | 23,7 | 190 | 40 | 16 |
| K0698.24400 | 24 | M24 | 400 | 23,7 | 240 | 40 | 16 |
| K0698.28100 | 28 | M24 | 100 | 27,7 | 70 | 44 | 18 |
| K0698.28125 | 28 | M24 | 125 | 27,7 | 85 | 44 | 18 |
| K0698.28160 | 28 | M24 | 160 | 27,7 | 110 | 44 | 18 |
| K0698.28200 | 28 | M24 | 200 | 27,7 | 125 | 44 | 18 |
| K0698.28250 | 28 | M24 | 250 | 27,7 | 150 | 44 | 18 |
| K0698.28315 | 28 | M24 | 315 | 27,7 | 190 | 44 | 18 |
| K0698.28400 | 28 | M24 | 400 | 27,7 | 240 | 44 | 18 |
| K0698.36125 | 36 | M30 | 125 | 35,6 | 80 | 54 | 22 |
| K0698.36160 | 36 | M30 | 160 | 35,6 | 110 | 54 | 22 |
| K0698.36200 | 36 | M30 | 200 | 35,6 | 135 | 54 | 22 |
| K0698.36250 | 36 | M30 | 250 | 35,6 | 150 | 54 | 22 |
| K0698.36315 | 36 | M30 | 315 | 35,6 | 200 | 54 | 22 |
| K0698.36500 | 36 | M30 | 500 | 35,6 | 300 | 54 | 22 |
| K0698.42160 | 42 | M36 | 160 | 41,6 | 100 | 65 | 26 |
| K0698.42250 | 42 | M36 | 250 | 41,6 | 175 | 65 | 26 |
| K0698.42400 | 42 | M36 | 400 | 41,6 | 250 | 65 | 26 |



K0699**Tornillos para ranuras en T**

DIN 787, 12.9

**KIPP Tornillos para ranuras en T DIN 787, 12.9**

| Referencia | Medida nominal de la ranura | D1 | L | A | B | E1/E2 | K |
|--------------|-----------------------------|-----|-----|------|-----|-------|----|
| K0699.11250 | 12 | M12 | 50 | 11,7 | 35 | 18 | 7 |
| K0699.11280 | 12 | M12 | 80 | 11,7 | 55 | 18 | 7 |
| K0699.112100 | 12 | M12 | 100 | 11,7 | 65 | 18 | 7 |
| K0699.112125 | 12 | M12 | 125 | 11,7 | 75 | 18 | 7 |
| K0699.112160 | 12 | M12 | 160 | 11,7 | 100 | 18 | 7 |
| K0699.112200 | 12 | M12 | 200 | 11,7 | 120 | 18 | 7 |
| K0699.11450 | 14 | M12 | 50 | 13,7 | 35 | 22 | 8 |
| K0699.11480 | 14 | M12 | 80 | 13,7 | 55 | 22 | 8 |
| K0699.114100 | 14 | M12 | 100 | 13,7 | 65 | 22 | 8 |
| K0699.114125 | 14 | M12 | 125 | 13,7 | 75 | 22 | 8 |
| K0699.114160 | 14 | M12 | 160 | 13,7 | 100 | 22 | 8 |
| K0699.114200 | 14 | M12 | 200 | 13,7 | 120 | 22 | 8 |
| K0699.11663 | 16 | M16 | 63 | 15,7 | 45 | 25 | 9 |
| K0699.116100 | 16 | M16 | 100 | 15,7 | 65 | 25 | 9 |
| K0699.116125 | 16 | M16 | 125 | 15,7 | 85 | 25 | 9 |
| K0699.116160 | 16 | M16 | 160 | 15,7 | 100 | 25 | 9 |
| K0699.116250 | 16 | M16 | 250 | 15,7 | 150 | 25 | 9 |
| K0699.11863 | 18 | M16 | 63 | 17,7 | 45 | 28 | 10 |
| K0699.118100 | 18 | M16 | 100 | 17,7 | 65 | 28 | 10 |
| K0699.118125 | 18 | M16 | 125 | 17,7 | 85 | 28 | 10 |
| K0699.118160 | 18 | M16 | 160 | 17,7 | 100 | 28 | 10 |
| K0699.118250 | 18 | M16 | 250 | 17,7 | 150 | 28 | 10 |
| K0699.12080 | 20 | M20 | 80 | 19,7 | 55 | 32 | 12 |
| K0699.120125 | 20 | M20 | 125 | 19,7 | 85 | 32 | 12 |
| K0699.120200 | 20 | M20 | 200 | 19,7 | 125 | 32 | 12 |
| K0699.120315 | 20 | M20 | 315 | 19,7 | 190 | 32 | 12 |
| K0699.12280 | 22 | M20 | 80 | 21,7 | 55 | 35 | 14 |
| K0699.122125 | 22 | M20 | 125 | 21,7 | 85 | 35 | 14 |
| K0699.122200 | 22 | M20 | 200 | 21,7 | 125 | 35 | 14 |
| K0699.122315 | 22 | M20 | 315 | 21,7 | 190 | 35 | 14 |
| K0699.124100 | 24 | M24 | 100 | 23,7 | 70 | 40 | 16 |
| K0699.124160 | 24 | M24 | 160 | 23,7 | 110 | 40 | 16 |
| K0699.124250 | 24 | M24 | 250 | 23,7 | 150 | 40 | 16 |
| K0699.124400 | 24 | M24 | 400 | 23,7 | 240 | 40 | 16 |
| K0699.128100 | 28 | M24 | 100 | 27,7 | 70 | 44 | 18 |
| K0699.128160 | 28 | M24 | 160 | 27,7 | 110 | 44 | 18 |
| K0699.128250 | 28 | M24 | 250 | 27,7 | 150 | 44 | 18 |
| K0699.128400 | 28 | M24 | 400 | 27,7 | 240 | 44 | 18 |

Material:

Acero para temple y revenido.

Versión:

Forjado, guía de ranuras fresada, rosca laminada, tratado en caliente con 12.9, negro.

Ejemplo de pedido:

K0699.112125